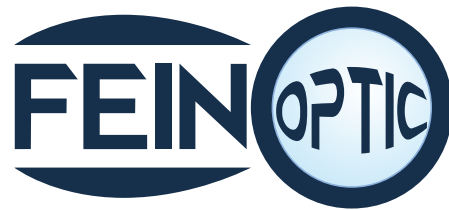


# DXHD56P

## Zoom Digital Microscope

### User's Manual

---

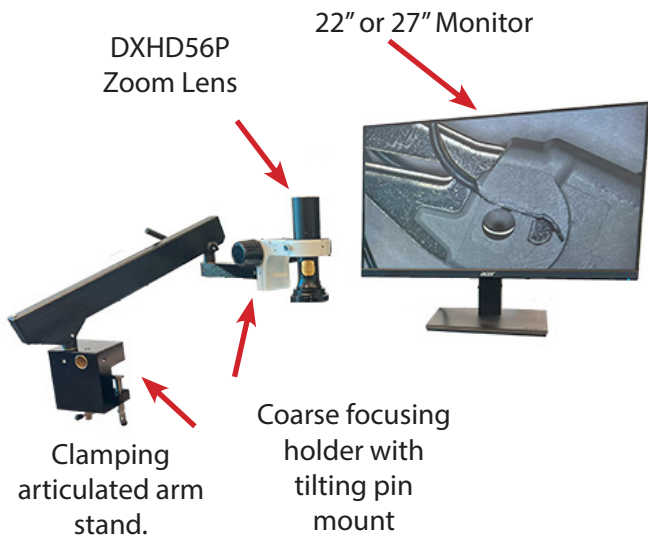
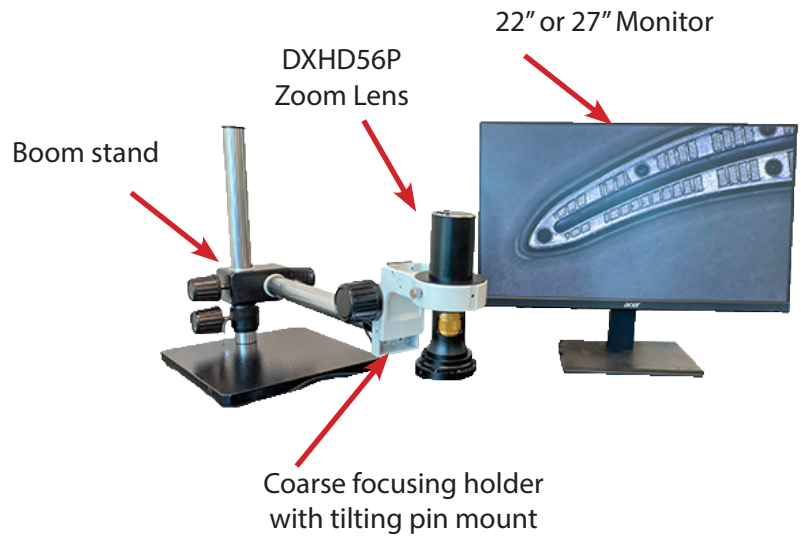
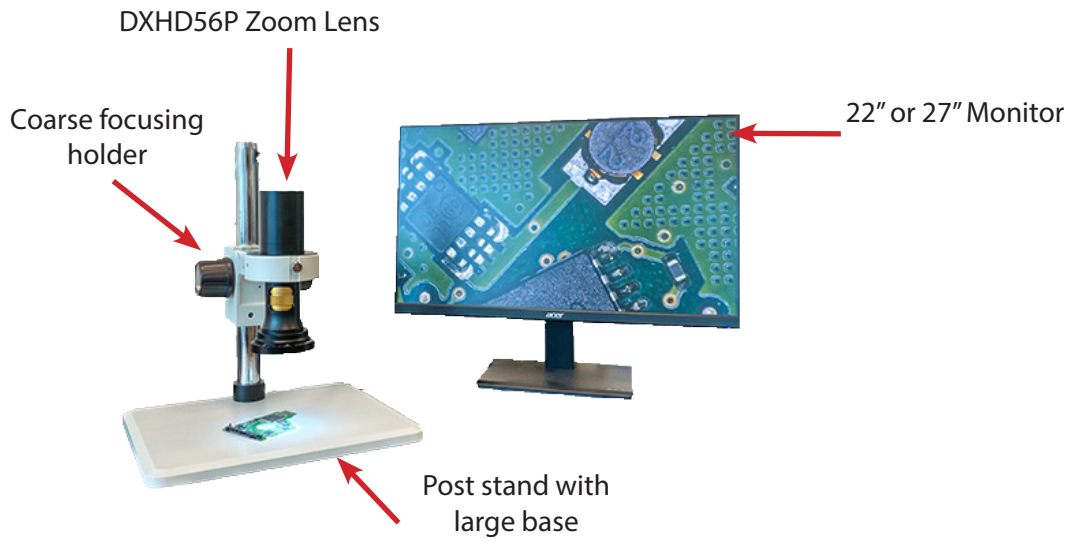


[info@feinoptic.com](mailto:info@feinoptic.com)

# DXHD56P Zoom Digital Microscope



# DXHD56P Zoom Digital Microscope System Components



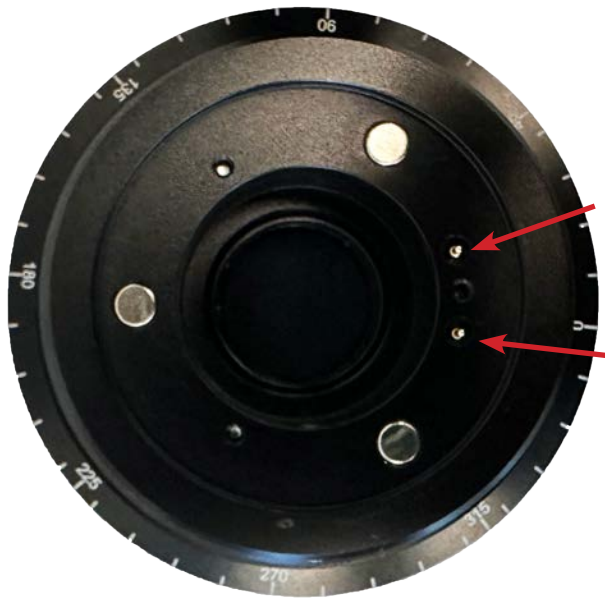
# DXHD56P Zoom Digital Microscope Components



# DXHD56P Zoom Digital Microscope Assembly



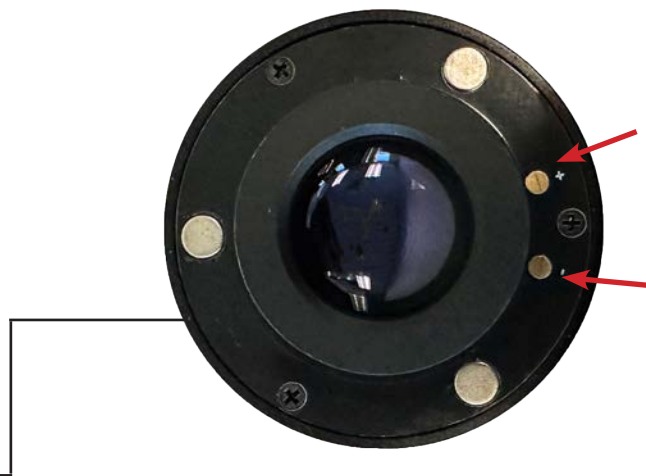
The LED Ring Light with integrated polarizer and analyzer will already be assembled when you receive your system. However, should the ring light ever need to be removed and reassembled, ensure that the pins of the LED Ring Light align with the connector points on the underside of the microscope. Failure to align the pins with the connector points will result in the ring light not being supplied with power.



LED Ring Light pins



Connector points on underside of microscope



# Camera and Monitor Assembly



Plug one end of the HDMI cable into the HDMI port on the built-in camera. Plug the other end of the HDMI cable into the HDMI port on the monitor.



Plug the USB Mouse into the USB Mouse port on the built-in camera.



Plug the power adapter into the power adapter port on the built-in camera. Then plug the power adapter into a compatible power outlet.



If the use of an SD card is required, insert the SD card into the SD card slot.

# Camera and Monitor Assembly



With the camera and monitor now assembled, plug the camera and monitor into a power outlet. A blue indicator light will illuminate indicating the camera is powered on and ready for use.

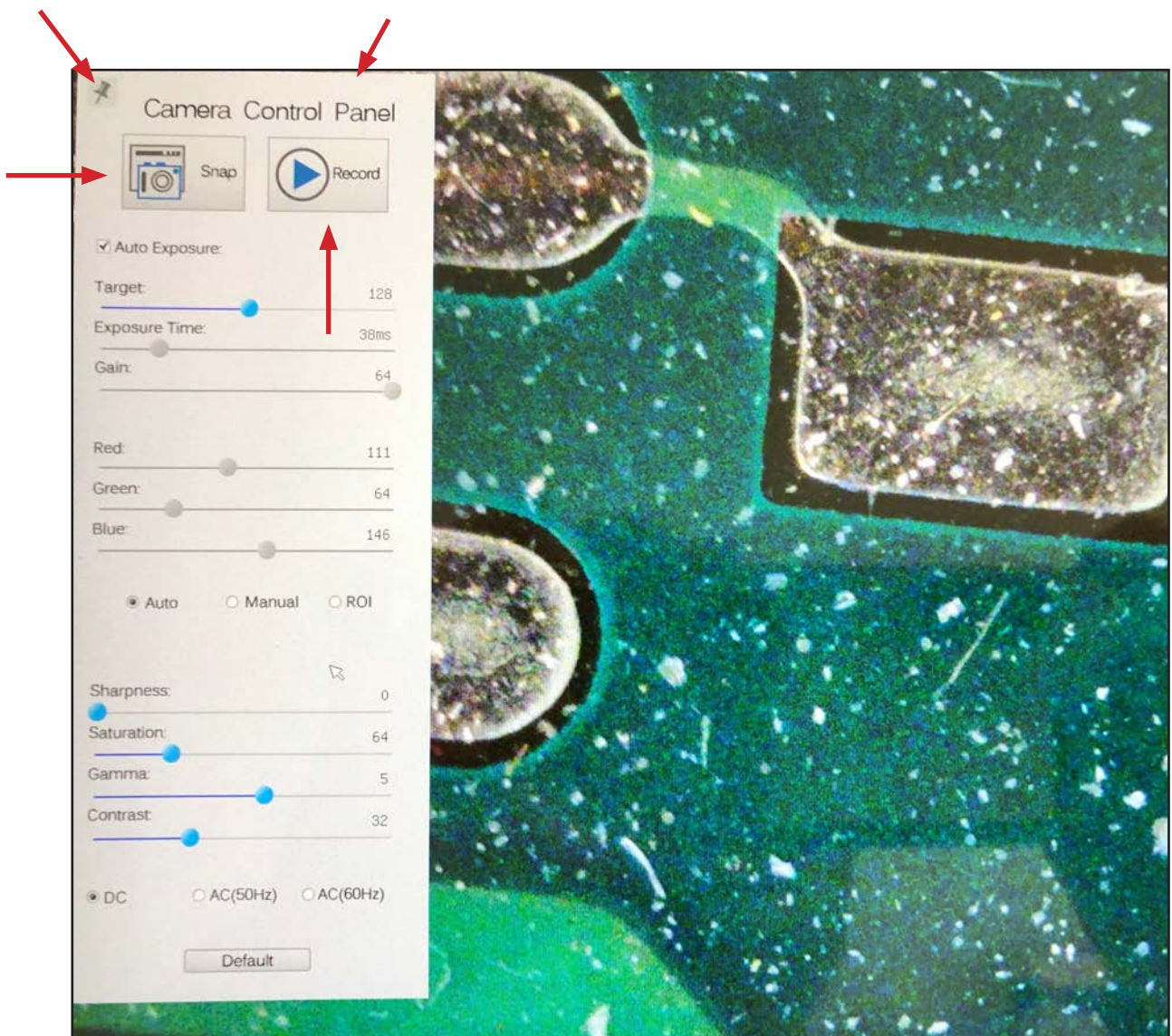


Once the camera and monitor are powered on, a live image of your stage/specimen will appear on the monitor.



# Working with the Tool Bars

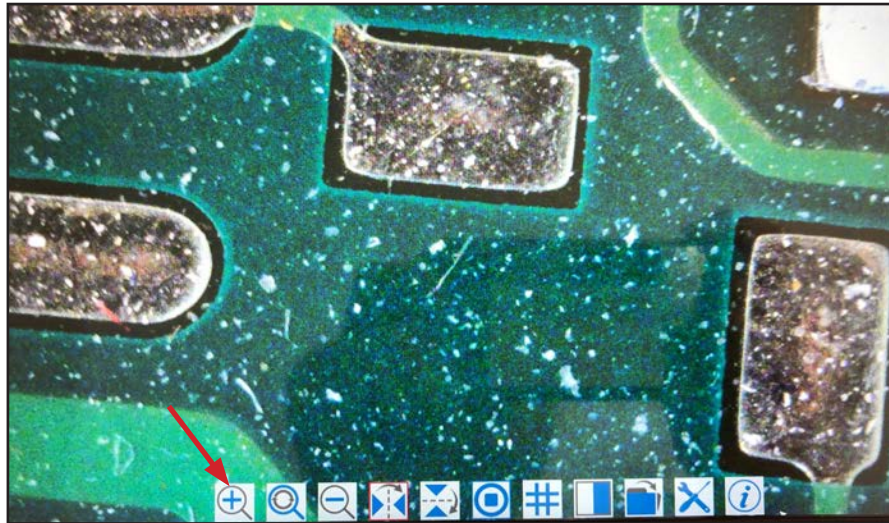
- Hover the mouse cursor on the left hand side of the monitor.
- A control panel will appear.
- Here you can enhance the appearance of your image by adjusting the settings.
- To capture an image click the Snap button. The image will be saved directly to the SD card.
- To begin recording a live image, click the Record button. To stop the recording, click the Record button again.
- This tool bar can be pinned by clicking on the thumb tack.





## Working with the Tool Bars

- Hover the mouse cursor in the lower center portion of the monitor.
- A tool bar will appear with additional options.



- Zoom In- Select this button to zoom in on the image.



- Reset Zoom- Select this button to reset the image back to the default zoom setting.



- Zoom Out- Select this button to zoom out on the image.



- Horizontal Flip- Select this button to horizontally flip the image.

# Working with the Tool Bars



- Vertical Flip- Select this button to vertically flip the image.

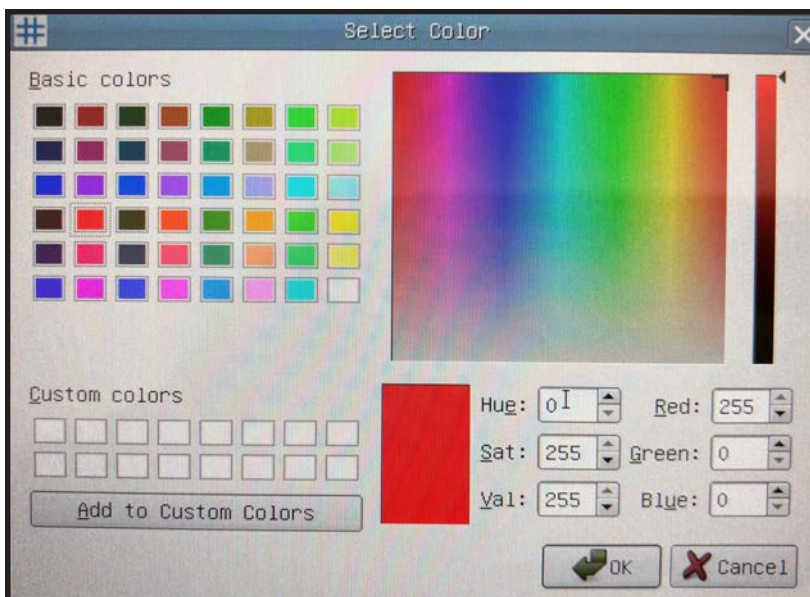
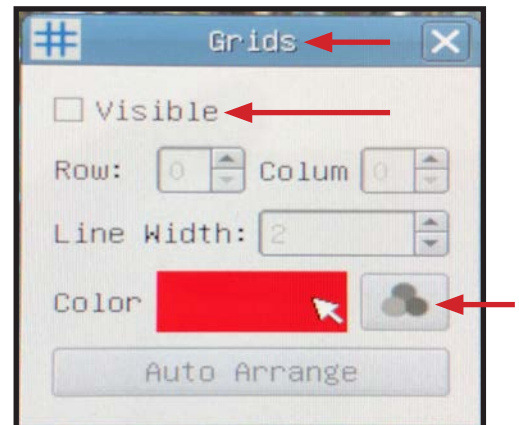


- Freeze / Resume- Select this button to freeze or resume.



- Grids- Select this button to create a grip overlay on your live image.

- A grid box will appear with options to select the number of rows and columns.
- There is also an option to change the color of the grid lines. Select the "Color" button. A "Select Color" box will display allowing the grid color to be customized.
- To remove the grid overlay, uncheck the "Visible" box.



# Working with the Tool Bars



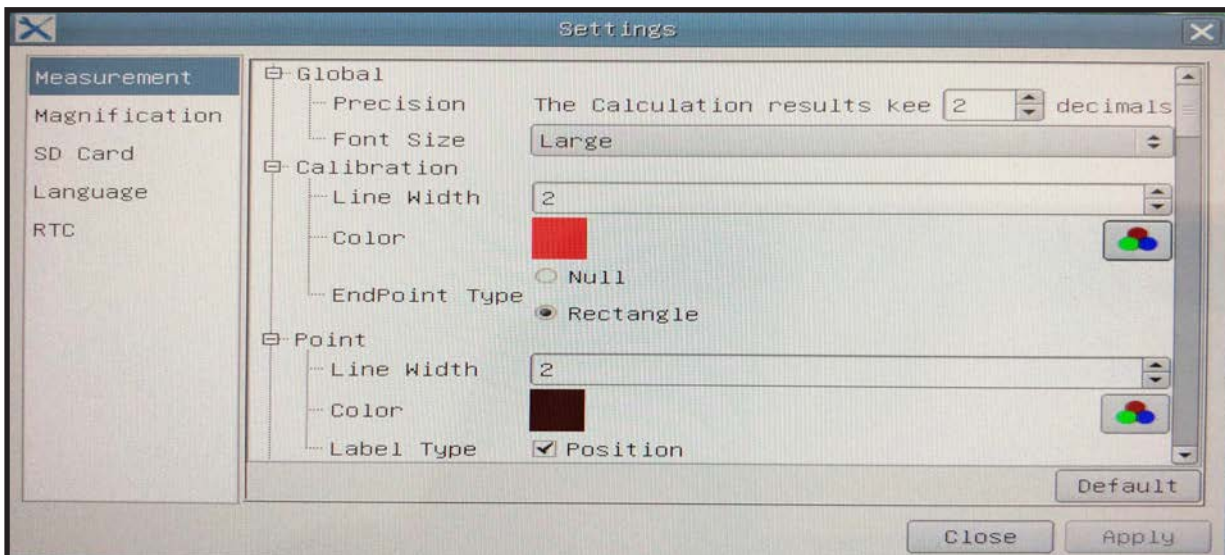
- Compare image- will split the monitor allowing for a side by side comparison of a chosen captured image and the live image.



- Browser- Allows access to the captured images saved to the SD card.



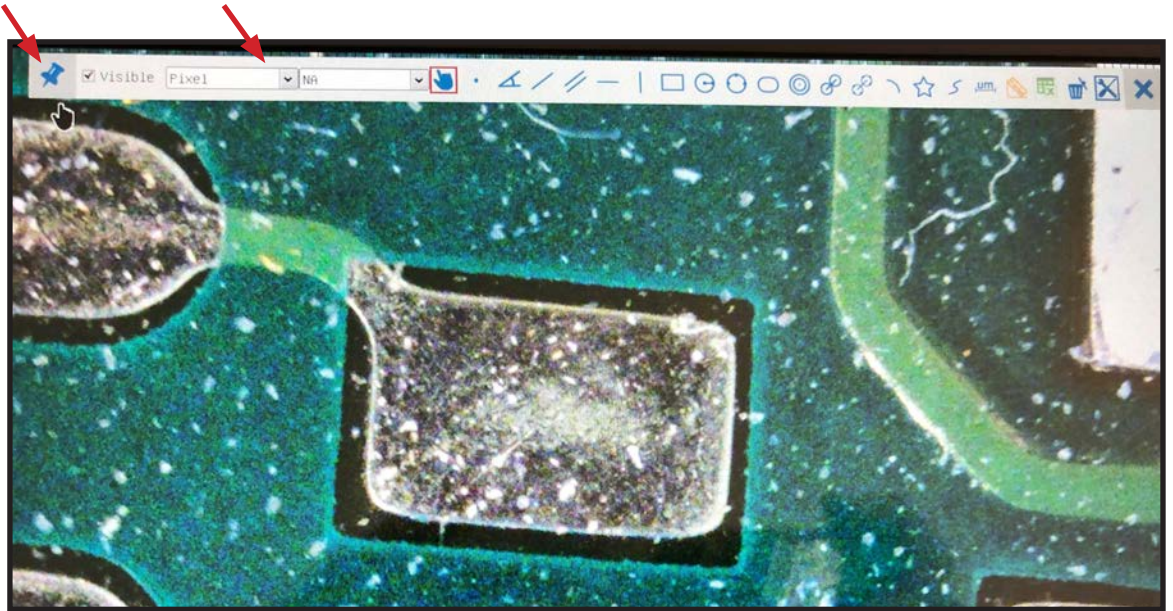
- Settings- Access camera and feature settings to customize preferences.



- Info- Advises the software version.

## Working with the Tool Bars

- Hover the mouse cursor in the upper center portion of the monitor.
- A tool bar will appear with additional options.
- The tool bar can be pinned by clicking on the thumb tack.

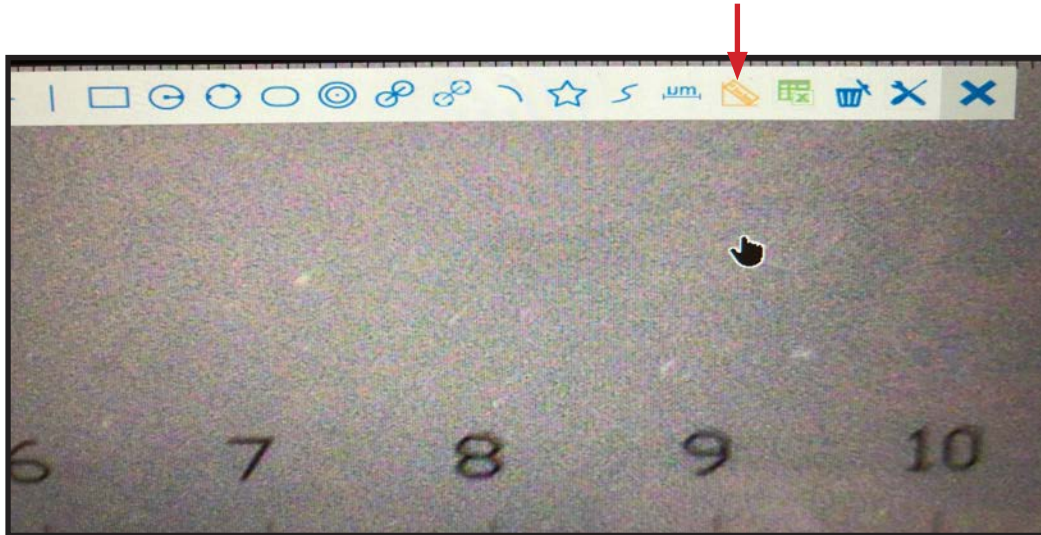


- Select the drop down arrow to select the unit of measure.

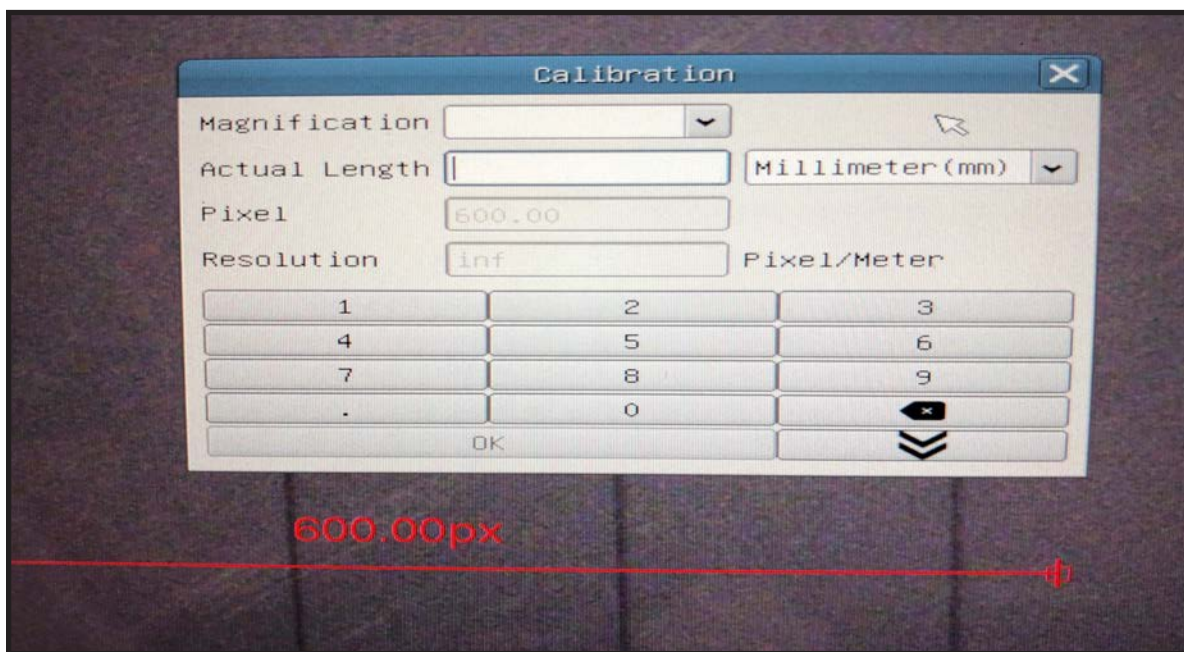
- This tool bar offers many options for different measurement methods.
- The microscope and camera must first be calibrated for accurate measurements.

# Calibrating and Measuring

- Place a stage micrometer on the specimen stage and bring it into focus. Hover over the top tool bar and select the calibration icon.

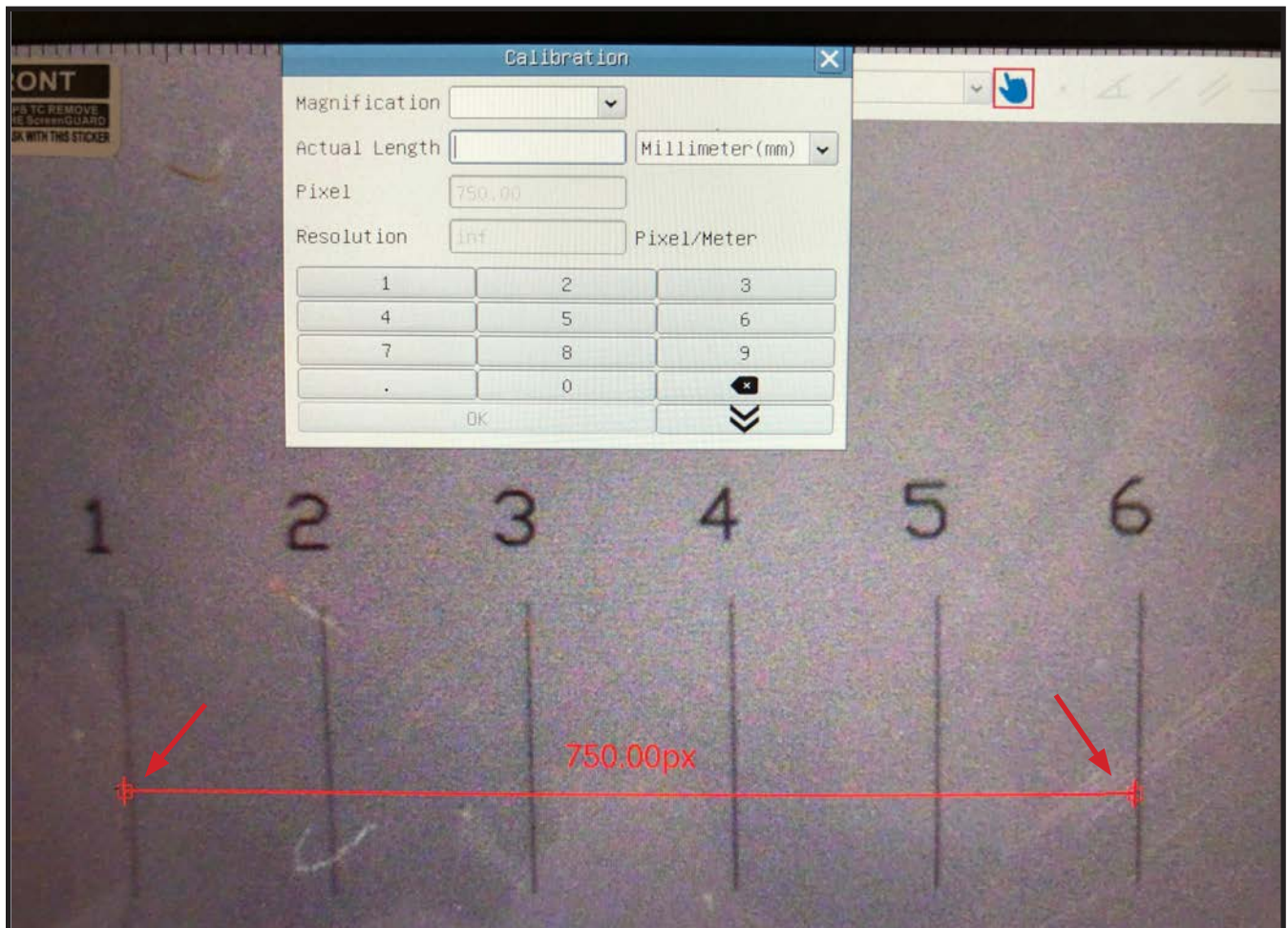


- A calibration box and a measurement line will appear.



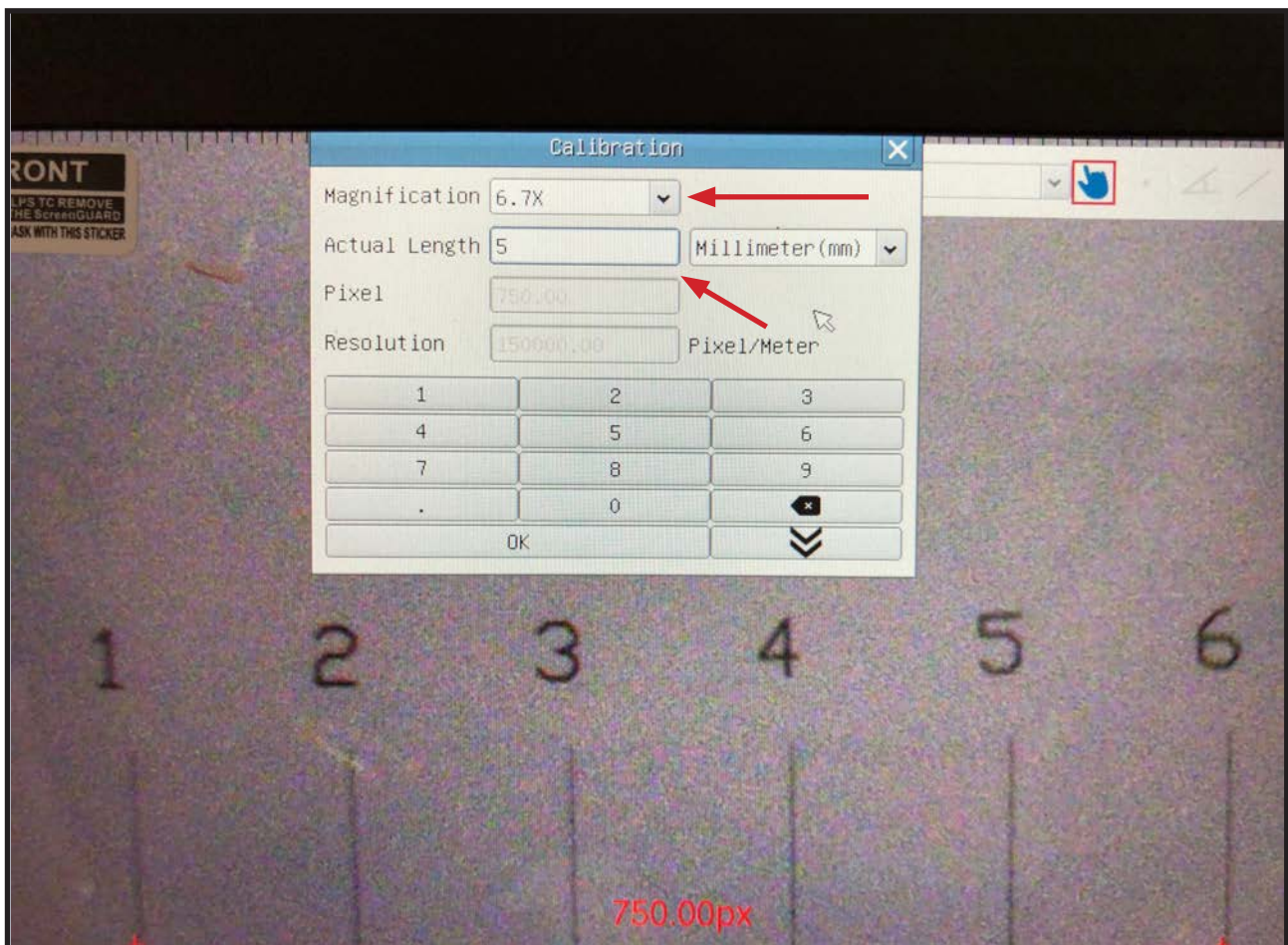
# Calibrating and Measuring

- Use the mouse cursor to place the left side of the measurement line on the leading edge of the stage micrometer. In this case it is the 1 mm line.
- Then move the right side of the measurement line to the inside edge of the furthest visible line. In this case it is the 6 mm line.



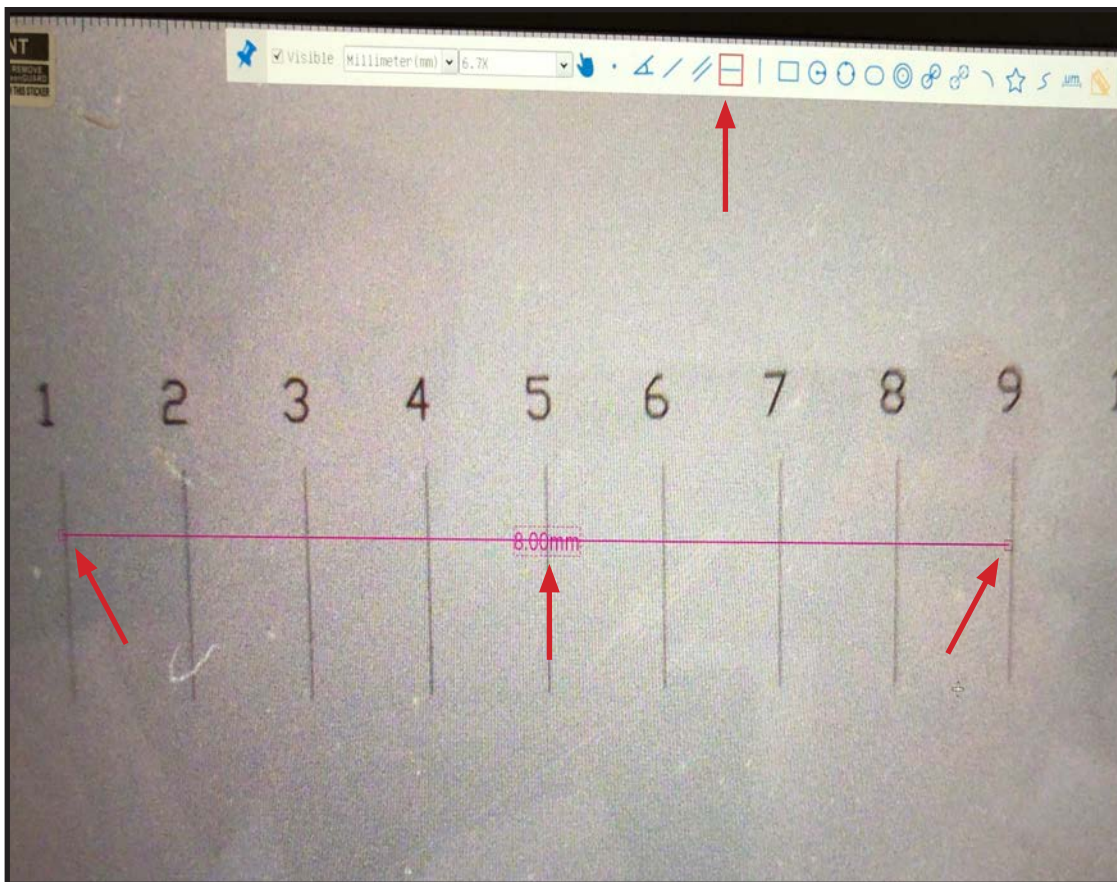
# Calibrating and Measuring

- Input the total magnification by using the drop down box or the mouse to select the magnification with the numbers provided in the keypad.
- In this example the total magnification is 6.7x (10x eyepieces with 0.67x detent on the stereo microscope)
- Next input the actual length which appears above the measurement line. In this example it is 5 mm.
- Click OK and the calibration is complete.



# Calibrating and Measuring

- Test the calibration by selecting the horizontal line option from the top tool bar.
- Using the cross-hair cursor that appears, click on the leading edge of the stage micrometer line.
- Then move the measurement line to the inside edge of a stage micrometer line.
- The measurement of the line will appear in the unit of measurement that was initially selected when the calibration was performed.





## Problem

## Solution

No live image displayed	Camera or monitor are not powered on. Check the power cord and press the ON/OFF buttons.
Live image is dark	Adjust the illumination on the microscope. Use the white balance option on the control panel.
Live image is upside down or backwards	Use the Rotate and Flip features on the tool bar.
Dust or dirt is visible in the live image.	Clean the sample Clean the C-mount Clean the lens on the camera